	CERTIFICATION CENTER	Document No	UB-GI-BP-001	
	GC CERTIFICATION PROGRAMME	Release Date	15.08.2016	
		Revision Date	30.09.2016	No

1. OBJECTIVE

1.1 The objective of this certification programme, referred to as Regulation hereafter, is to describe implementations which are to be enforced by the Electrotechnical Sector Directorate, within the coverage of the Gulf Technical Regulation for Low Voltage Electrical Equipment and Appliances

1.2 This service programme is in compliance with the Type 1a Certification Programme according to TS EN ISO/IEC 17067

1.3 This certification programme shows that the products within this Regulation conforms with relevant product standards and the requirements of GSO GCC Technical Regulations, and that a quality management system is carried out to provide the continuity of this conformity.

2.SCOPE

This service programme covers the conformity assessment procedures, assigned by the Electrotechnical Sector Directorate, for the products defined in Gulf Technical Regulation for Low Voltage Electrical Equipment and Appliances.

2.1 Notified Body Criteria

BD09100502 - GSO Guide on Notified Bodies

2.2.Source Legislation

BD-142004-01 Gulf Technical Regulation for Low Voltage Electrical Equipment and Appliances
 TC143301-01 List 2: Electrical equipment and appliances list in Annex 4

2.3 Product Groups

All electrical equipment and appliances operating under low voltage within the scope of the Regulation Products are subjected to the conformity assessment procedures, by carrying out the required stages according to the procedures in flow chart in part 6 and in part 4.

3. RESPONSIBLE DEPARTMENTS:


Head of the Center
 Head of Group
 Elektrotechnical Sector Director
 Elektrotechnical Sector System Manager
 Relevant Product Group Inspection Expert

4. IMPLEMENTATION

4.1. Stages of the Conformity Assessment Procedures for GC Marking

4.1.1. Acceptance of Applications

According to **Product Certification Application Procedure**, applications are made to TSE with the **Product Certification Application Form**, **GC Application-Additional Information Form**, the Technical File and the Application File consisting of other certificates and documents required by the certification procedure chosen by the manufacturer.

	CERTIFICATION CENTER	Document No	UB-GI-BP-001	
	GC CERTIFICATION PROGRAMME	Release Date	15.08.2016	
		Revision Date	30.09.2016	No

Application File shall be assessed according to **Product Certification Application Procedure**. As a result of the assessment, certification procedures are initiated for files, which are deemed appropriate for carrying out conformity assessment services.

4.1.2 Implementation

4.1.2.1 Introduction

Conformity assessment procedures for GC marking are given in flow charts given in Clause 6 of this service programme. Conformity assessment models in these charts are described below:

4.1.2.2. Conformity Assessment by the Producer - Type Examination

Type examination, and the examination and certification of the conformity of a toy planned to be produced, design documents and a product to be referred as type hereinafter to the provisions of the regulation shall be made in accordance with Module B Conformity Assessment Procedure. As a result of the examination, **GC Examination and Outcome Assessment Form** is prepared and post examination certification procedures are conducted with, if performed, the inspection and test report, in accordance with **Product Certification Outcome Assessment Procedure**. *National deviations of the countries, from which the relevant products are specified to be imported, are researched and customs legislations and national standards, such as SASO (Saudi Arabia), PAI (Kuwait), DGSM (Oman), QS (Qatar), which include these deviations, are considered during assessment procedures of the products subjecting to the application.* **GC National Deviations List** shall be considered for the deviation assessment of the products. Total reports evaluated along with the **GC Examination And Outcome Assessment Form** are submitted to Certification Committee.

Action shall be taken according to the **Certification Drafting Procedure**, if Certification Committee decides to give the Certificate. As a result of the decision on issuing the certificate, GC marking certificate, its attachments and, if prepared, examination and test reports are submitted to applicant.

As a result of any kind of sanction decision taken by the Certification Committee as Warning/Suspension/Decertification and the annulment of contract; **Procedure of the Sanctions to be imposed on Certified Bodies** shall be followed.

GC Marking Type Examination Certificate shall be issued if the result of conformity assessment regarding the application is positive. The producer shall attach Gulf Conformity marking (GC mark) to each electrical appliance conforming to the technical regulation and make up a Conformity Declaration.

If necessary, authorized bodies and other notified bodies are notified of the results of conformity according to **External Notifications and Publication Procedure**.

4.2 Post Examination Processes


4.2.1 Certificate Tracking

The validation, cancellation, withdrawal and suspension processes of certificate are carried out according to **Product Certification Outcome Assessment Procedure**.

GC Certificates are required to be recorded to the GSO Certificate Tracking System by the notified body as of June 1, 2016. Also, G marking (with notified body number) and QR code must be included in certificate. Its attachment on the product is optional.


4.2.2 Billing

Fees in return for services are invoiced according to **Conformity Assessment Services Finalizing Procedure**.

	CERTIFICATION CENTER	Document No	UB-GI-BP-001		
	GC CERTIFICATION PROGRAMME	Release Date	15.08.2016		
		Revision Date	30.09.2016	No	2

4.2.3 Communication

Any kind of communication with authorized bodies and other notified bodies is performed according to **External Notifications and Publication Procedure**. When necessary, GSO shall be provided with technical support by TSE technical personnel for free.

	CERTIFICATION CENTER	Document No	UB-GI-BP-001		
	GC CERTIFICATION PROGRAMME	Release Date	15.08.2016		
		Revision Date	30.09.2016	No	2

5. RELATED DOCUMENTS AND REGISTRATIONS

BD-142004-01 Gulf Technical Regulation for Low Voltage Electrical Equipment and Appliances

TC143301-01 List 2: Electrical equipment and appliances list in Annex 4

TSE - Certification Directive

TSE - Product Certification Procedures and Principles

Product Certification Application Procedure

Product Certification Planning Procedure

Product Certification Outcome Assessment Procedure

Certification Drafting Procedure

External Notifications and Publication Procedure

GC National Deviations List

Procedure of the Sanctions to be Imposed On Certified Bodies

Product Certification Application Form


GC Application- Additional Information Form

GC Examination and Outcome Assessment Form

GC Type Examination / Conformity Confirmation Document and Annex

GC External Document List

GC - Expert List

	CERTIFICATION CENTER	Document No	UB-GI-BP-001	
	GC CERTIFICATION PROGRAMME	Release Date	15.08.2016	
		Revision Date	30.09.2016	No

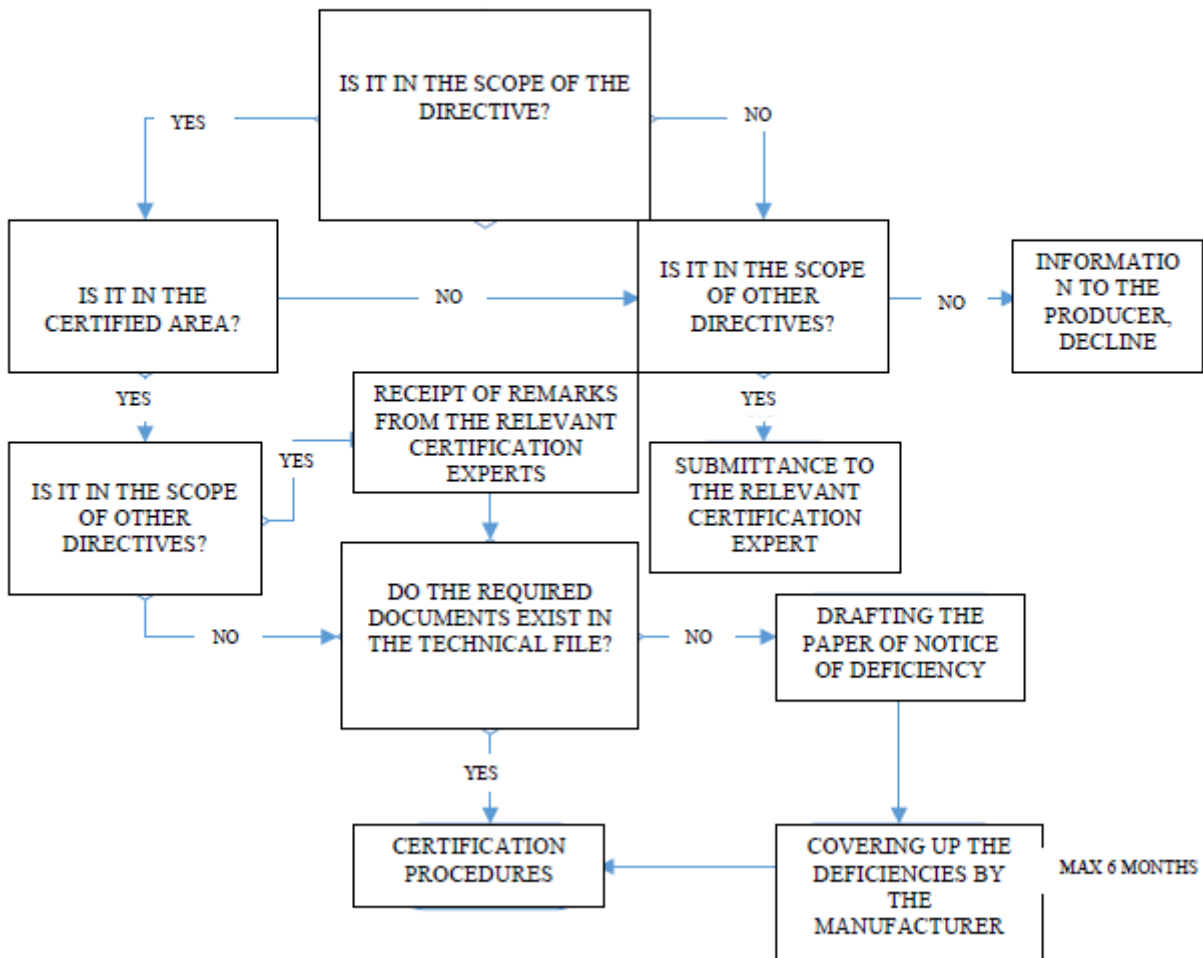
6. FLOW CHART


FLOW CHART OF GC MARKING CONFORMITY ASSESSMENT PROCESSES



CERTIFICATION PROCESSES FLOW CHART

PRE-EXAMINATION FLOW CHART (Maximum 10 Days)



	CERTIFICATION CENTER	Document No	UB-GI-BP-001	
	GC CERTIFICATION PROGRAMME	Release Date	15.08.2016	
		Revision Date	30.09.2016	No

CERTIFICATION PROCESSES FLOW CHART

CERTIFICATION FLOW CHART FOR THE PRODUCER

