	CERTIFICATION CENTER	Document No	DB-TSD-BP-001		
	SERVICE PROGRAM FOR CHILDREN TOYS	Date of Publication	15.08.2016		
		Date of Revision	18.08.2016	No	1

1. OBJECTIVE:

1.1 The objective of this service program is to explain the implementations to be performed by the Directorate of Directives in scope of Regulation on Children Toys (88/378/EEC, 2009/48/EC, BD-131704-01), referred to as Regulation hereinafter.

1.2 This service program is in conformity with Type 1a certification program according to TS EN ISO/IEC 17067.

2.SCOPE

This service program includes conformity assessment procedures, authorized by the Directorate of Directives, for defined products in the part “Scope”, set out in Clause 2 of Regulation on Children Toys.

2.1 Notified Body Criteria

Declaration for Notified Bodies to be Active in Children Toys Business” published in the Official Gazette of the Republic of Turkey

BD09100502 - GSO Guide on Notified Bodies

2.2. Source Legislation

88/378/EEC Toys Directive (Official Journal No. 28807 of 31 October 2013)

2009/48/EC Council Directive Safety of Toys (Official Journal No. L170/1 of 30 June 2009),

BD-131704-01GSO Technical Regulation on Toys: Second Edition

2.3 Product groups

All children toys in scope with the Regulation.

Products shall be subjected to conformity assessment procedure by carrying out required stages according to the declared modules and procedures in flow chart in part 7 and in part 4.

3. RESPONSIBLE DEPARTMENTS:

Head of the Center

Head of Group

Director of Directives

Directive Responsible

Directive Experts

4. IMPLEMENTATION


4.1. Stages of Conformity Assessment Procedure

4.1.1. Acceptance of Applications

According to **Conformity Assessment Application Procedure**, applications shall be made to TSE with the **Conformity Assessment For New/Global/Old Approach Directives Application Form** and **Conformity Assessment Information Form on Children Toys**, the Technical File, and with other documents and files required by the certification procedure, which are chosen by the manufacturer.

Application File shall be assessed according to **Conformity Assessment Application Procedure**. As a result of assessment, certification procedures shall be initiated for files, which are deemed appropriate for conformity assessment services.

4.1.2 Modules and Implementations

	CERTIFICATION CENTER	Document No	DB-TSD-BP-001		
	SERVICE PROGRAM FOR CHILDREN TOYS	Date of Publication	15.08.2016		
		Date of Revision	18.08.2016	No	1

4.1.2.1 Introduction

Conformity assessment processes are given in flow charts in Clause 6 of this service programme. Conformity assessment models in these charts are described as following:

4.1.2.2. Conformity Assessment by the Producer- Module B- Type Examination

Type examination, and the examination and certification of the conformity of a toy planned to be produced, design documents and a product to be referred as type hereinafter to the provisions of the regulation shall be made in accordance with Module B Conformity Assessment Procedure. As a result of the examination, **GCC Technical Regulation on Children Toys (BD131704-01) Essential Requirements Conformity Assessment Report** shall be prepared and, shall be notified to the applicant with, if performed, the inspection and test report.

In the event that the result of conformity assessment of the application object type is positive, **Type Examining Certificate** shall be issued. The manufacturer shall attach GC mark to each children toy conforming with Gulf technical regulations and issue Conformity Declaration in accordance with Clause 15(1) of the Regulation.

Conformity assessment results shall be notified to the authorized bodies and the other notified bodies if necessary, according to External Declarations and Announcements Procedures.

4.1.2.3. Conformity Assessment- Confirmation of Conformity of the Importer

To provide conformity of children Toys with Gulf Technical Regulations in force, the toys shall be tested and evaluated according to the related Gulf standards. In the event that there is no related standard, the tests stated by the Notified Institution shall be performed following the approval of Gulf Conformity Assessment Committee.

Having regard to the risk analyse of the manufacturer, sample selection in the scope of GSO- Regulation on Children Toys shall be made in order to supply homogeneity according to the guides of CR 14379 Classification of Children Toys and ISO-TC181_N0862_Final_text_for_ISO-TR_8124-8_Safety of Children Toys.

In the event that Conformity Assessment results are positive, Conformity Declaration according to Regulation Clause 15(2) shall be issued by the importer and **Certificate of Conformity** issued by the notified body. It is under the responsibility of the Notified Institution to attach the Number of the Notified Institution to the each notified children toy.

Conformity assessment results shall be notified to the authorized bodies and the other notified bodies if necessary, according to External Declarations and Announcements Procedures.

4.2 After Examining Processes

4.2.2 Certificate Tracking


The validation, annulment, withdrawal and suspension procedures of the Certificate shall be conducted according to **Finalization of the Conformity Assessment Services Procedure**.

It is required for the GC Certificates to be registered in GSO Certificate Tracking System as of 1 June 2016. Additionally, GC mark (with notified body number) and QR code have to be attached on the certificate. Its attachment on the product is optional.

4.2.2 Billing

Fees in return of services shall be invoiced according to Conformity Assessment Services Finalizing Procedure.


4.2.3 Communication

	CERTIFICATION CENTER	Document No	DB-TSD-BP-001		
	SERVICE PROGRAM FOR CHILDREN TOYS	Date of Publication	15.08.2016		
		Date of Revision	18.08.2016	No	1

Every kind of communication with authorized bodies and with other notified bodies shall be carried out according to **External Declarations and Announcements**. If necessary, free technical support to GSO shall be provided by TSI technical staff.

5. RELATED DOCUMENTS AND REGISTRATIONS

Toys Directive 88/378/AT (TR)
 Toys Safety Directive 2009/48/EEC (EN)
 GCC Technical Regulation on Children Toys (BD131704-01)
 TSE - Yönerge (002) Belgelendirme Yönergesi (TSE - Guideline (002) Certification Guideline)
 YNG08 Yeni Küresel Eski Yaklaşım Yönetmelikleri Uygunluk Değerlendirme Usul ve Esasları (New / Global / Old Approach Directives Conformity Assessment Procedures and Principles)
 Conformity Assessment Application Procedure
 Module B Conformity Assessment Procedure
 Conformity Assessment Test Procedure
 Conformity Assessment Services Finalizing Procedure
 External Notifications and Announcement Procedure
 Sampling Method
 Qualification and Assignment Method of Directives Experts
 New / Global / Old Approach Directives Conformity Assessment Application Form
 Conformity Assessment Information Form on Children Toys
 Assessment Form of Technical File for Children Toy
 GCC Technical Regulation on Children Toys (BD131704-01) Essential Requirements Conformity Assessment Report
 Type Examination for Children Toys / Conformity Certificate and its Annex
 Children Toys - External Based Document List
 Children Toys – Expert List

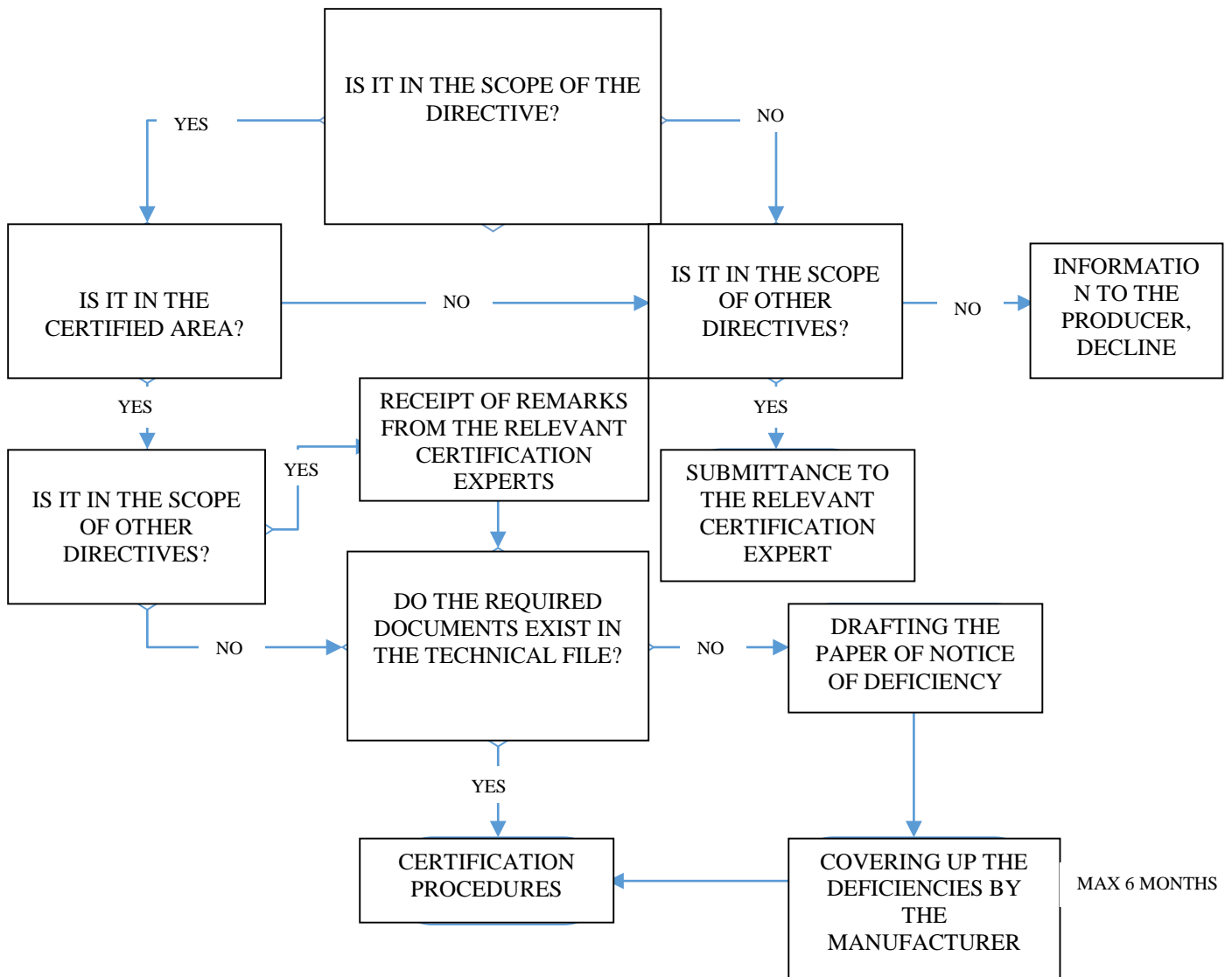
	CERTIFICATION CENTER	Document No	DB-TSD-BP-001		
	SERVICE PROGRAM FOR CHILDREN TOYS	Date of Publication	15.08.2016		
		Date of Revision	18.08.2016	No	1


6. FLOW CHART

CONFORMITY ASSESSMENT PROCESSES FLOW CHART



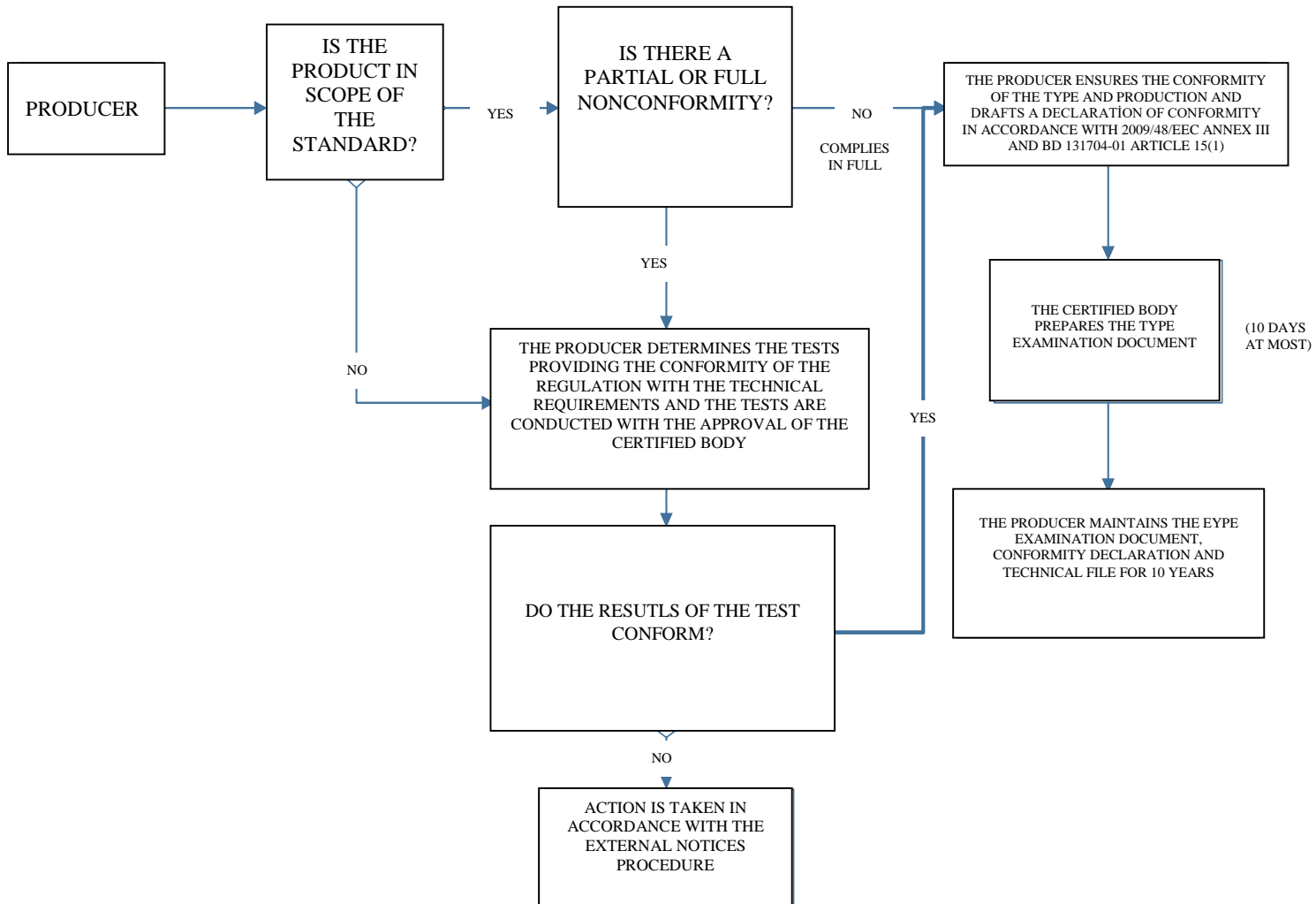
**PRE-EXAMINATION FLOW CHART
(Maximum 10 Days)**




	CERTIFICATION CENTER	Document No	DB-TSD-BP-001		
	SERVICE PROGRAM FOR CHILDREN TOYS	Date of Publication	15.08.2016		
		Date of Revision	18.08.2016	No	1

CERTIFICATION PROCESSES FLOW CHART

CERTIFICATION FLOW CHART FOR THE PRODUCER



	CERTIFICATION CENTER	Document No	DB-TSD-BP-001		
	SERVICE PROGRAM FOR CHILDREN TOYS	Date of Publication	15.08.2016		
		Date of Revision	18.08.2016	No	1

CERTIFICATION FLOW CHART FOR THE IMPORTER

